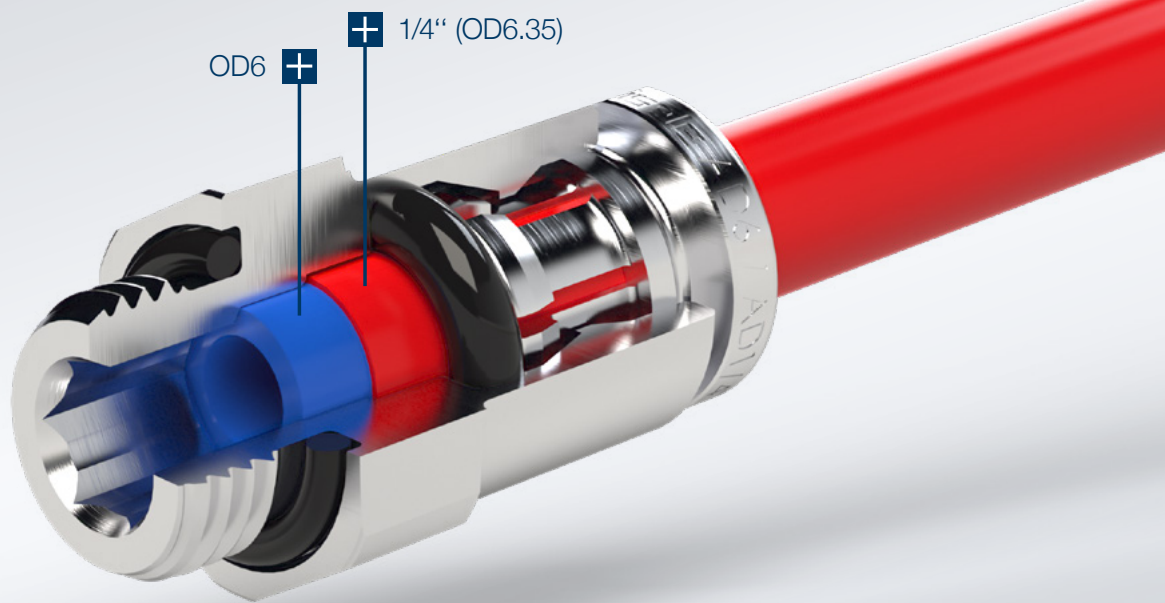


2-IN-1 CONNECTOR

ONE CONNECTOR.
TWO DIAMETERS.

Now available
in Stainless
Steel!



Eisele reduces the variety of parts in your warehouse with the new and unique 2-in-1 connector. This connector allows you to connect two different tube diameters using a single connector: Whether a tube with 1/4" OD or metric tube with 6mm OD, it does not make a difference, the connector remains the same. This connector provides a higher process reliability, by eliminating the possibility of a mix up due to country-specific connectors.



FEATURES AT A GLANCE

- **Tube OD-Ø:** 0.24" (6 mm) and 1/4" (6.35 mm)
- **Screw in thread:** M5, G1/8, G3/8, G1/4
- Straight, angled and T-shaped version with inner and outer hexagon
- Suitable for inch and metric tubing
- For air and vacuum applications
- **Working pressure range:**
 - Brass -0.95 to 15 bar
 - Stainless steel -0.95 to 16 bar
- **Working temperature range:**
 - Brass -20 to +80 °C
 - Stainless steel -20 to +120 °C
- **Housing material:**
 - Robust solid nickel-plated brass housing or
 - Non-corrosive and acid-resistant stainless steel 1.4301
- **Recommended tubing:**
 - Brass PA, PE
 - Stainless steel PA, PE, PU, PTFE



ADVANTAGES

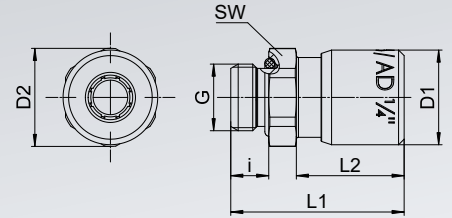
- **High process safety**
 - Eliminate confusion caused by country-specific connectors
 - Avoid customer complaints / issues
- **Optimized mounting process**
 - 5x faster assembly via hexagonal socket using torque allen wrench
- **Less storage space**
 - Decrease in storage costs
- **Higher diameter tolerance**
 - Compensate for oval deformed hoses
- **Reduced connector variety**
 - Less administrative efforts as a result of fewer part numbers and CAD data
 - No more country-specific connectors



Stainless Steel

Straight Screw-In Connector

- Inner- & outer hexagonal socket
- Whitworth pipe thread
- FKM sealing
- Material: Stainless Steel 1.4301



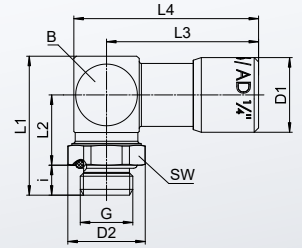
Part no.	G	for tube	Connection thread	Countersink-Ø max.	SW	i	L1	L2	D1	D2	NW	g/ piece
928-0266X	G1/8	OD6 OD6.35	11	13	5.5	25.1	14.1	13.7	14.2	5	13	



Stainless Steel

Angled Screw-In Connector

- Outer hexagonal socket
- Whitworth pipe thread
- FKM sealing
- Material: Stainless Steel 1.4301

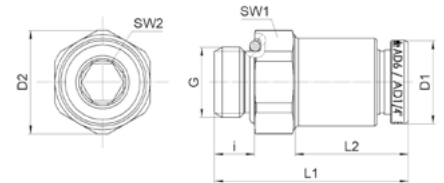


Part no.	G	for tube	SW	i	L1	L2	L3	L4	B	D1	D2	NW	g/ piece
986-0266X	G1/4	OD6 OD6.35	13	5.5	25.5	12.9	27.9	33.9	14	13.7	14.2	4	34



Straight Screw-In Connector

- Inner- & outer hexagonal socket
- Whitworth pipe thread
- FKM sealing

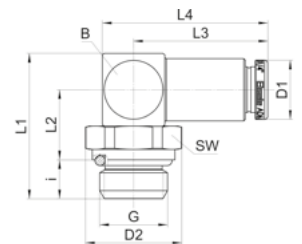


Part no.	G	for tube	SW1	SW2	i	L1	L2	D1	D2	NW	g/piece
828-0266	G1/8	OD6 1/4"	13	5	5.5	26.5	15.5	11.4	14.2	5.2	14



Angled Screw-In Connector

- Outer hexagonal socket
- Whitworth pipe thread
- FKM sealing

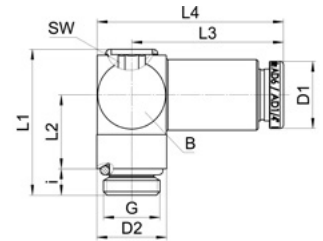


Part no.	G	for tube	SW	i	L1	L2	L3	L4	B	D1	D2	NW	g/ piece
886-0466	G1/4	OD6 1/4"	17	7.5	28	13.5	25.6	31.6	14	11.4	18.5	4	44
886-0666	G3/8	OD6 1/4"	20	7.5	29.5	15	25.6	31.6	14	11.4	21.8	4	56



Angled Screw-In Connector

- Inner hexagonal socket
- Whitworth pipe thread or metric
- FKM sealing

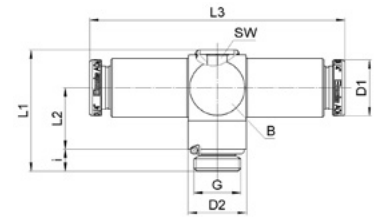


Part no.	G	for tube	SW	i	L1	L2	L3	B	D1	D2	NW	g/piece
856-0266X	G1/8	OD6 1/4"	4	4.5	24.8	12.6	25.9	31.8	13.5	11.4	11.9	4.5
857-5066X	M5	OD6 1/4"	3	3.5	18.8	8.4	25.6	31.8	13	11.4	9.9	2.1



T-Screw-In Connector

- Inner hexagonal socket
- Whitworth pipe thread
- FKM sealing

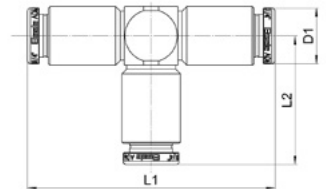


Part no.	G	for tube	SW	i	L1	L2	L3	B	D1	D2	NW	g/piece
858-0266X	G1/8	OD6 1/4"	4	4.5	24.8	12.6	52.2	13.8	11.4	11.9	4.5	40



T-Connector

- FKM sealing



Part no.	for tube	L1	L2	D1	NW	g/piece
878-6600	OD6 1/4"	50.6	26.3	11.4	4.5	40



Illustrations are not binding, subject to change, no liability for errors and misprints - 09.22