

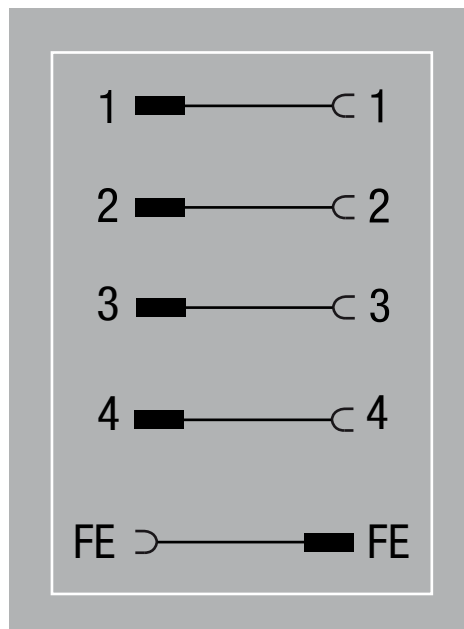
ARTICLE NUMBER 1831-LKC05025P041

MULTILINE E



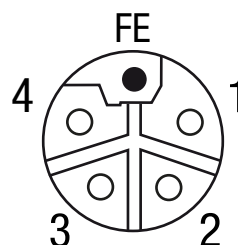
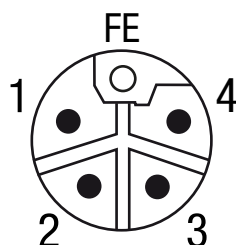
Power plug, male

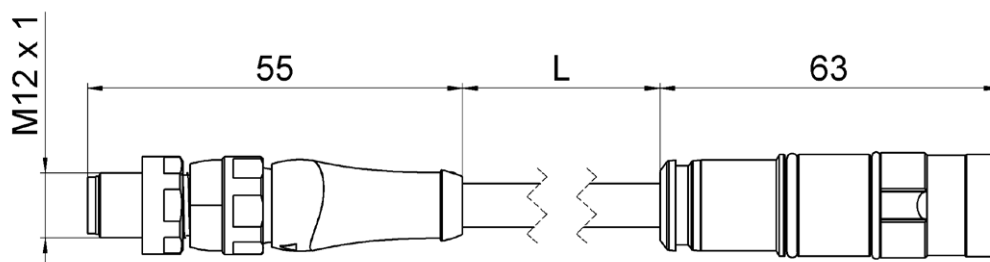
Insert - Socket type C
 M12
 5-pole
 L-coded
 fits to electrical insert
 1831-LKC05025P042



Male

Female





General data

Temperature range (fixed)	-25 to +80 °C
Temperature range (moving)	-25 to +80 °C
Rated impuls voltage	1,5 kV
Mounting method	inserted, tightened

Technical data

Operating voltage	max. 63 V DC
Operating current per contact (40°C)	max. 12 A
Number of poles	5
Coding	L-coded
Locking of ports	screw thread (M12×1 mm) recommended torque 0,6 Nm, self-securing
Compression gland	M12
Protection	IP65 and IP67 when inserted and tightened (EN 60529)
Material group	Category I according to IEC 60664-1
Material (base body)	POM

Cables

Cable length (L)	25 cm
Cable identification	P04
Number/diameter of wires	5 x 1,5 mm ²
Wire isolation	PP
Material (jacket)	PUR
Outer Ø (jacket)	8,2 mm ± 5%
Color (jacket)	black
Bend radius (fixed)	7,5 x outer Ø
Bend radius (moving)	10 x outer Ø

Commercial data

Minimum order quantity	1
Country of origin	DE