

STAINLESS STEEL MONOCOUPLINGS



Eisele

Member of **HENN** Connector Group

DRIP-FREE QUICK CONNECT COUPLING



- Nominal size: 7**
- Drip-free coupling and uncoupling possible
- High flow rate (20 l/min @ dP 1bar, v=3m/s , Kvs 1.2m³/h)
- Simple, intuitive and convenient operation via push button
- Color-coded: blue and red anodized aluminum
- Clean design
- Highly corrosion-resistant, ideal for cooling water applications
- Safe, single-stage locking
- One-hand operation
- Robust stainless steel housing 316L/316Ti (1.4404 / 1.4571)
- Operating pressure from 0 to 145 psi (0 to 10 bar)
- Acceptable medium: Cooling water | air | gases

NOMINAL SIZE 7

Drip-free couplings			Drip-free plug-in nipple				
	Thread	Function		Thread	Function		
	EPP4190-0307BLUE/RED	female G1/4	Drip-free		EPP4189-0307BLUE/RED	female G1/4	Drip-free
	EPP4190-0507BLUE/RED	female G3/8	Drip-free		EPP4189-0507BLUE/RED	female G3/8	Drip-free
	EPP4190-0407BLUE/RED	G1/4	Drip-free		EPP4189-0407BLUE/RED	G1/4	Drip-free
	EPP4190-0607BLUE/RED	G3/8	Drip-free		EPP4189-0607BLUE/RED	G3/8	Drip-free

CODED QUICK CONNECT COUPLING



- Nominal size: 5**
- Available with one-sided or double-sided shut-off function
- Integrated plug coding in round, triangular, hexagonal or octagonal ensures no mix-ups
- Robust stainless steel housing 316L/316Ti (1.4404 / 1.4571)
- FDA-compliant FPM low-temperature seals -58 to 392 F (-50 to 200 C)
- Operating pressure from 7 to 145 psi (0.5 to 10 bar)
- Acceptable medium: Cooling water | air | gases
- Hygienic design for easy cleaning

COUPLINGS FOR ONE-SIDED SHUT-OFF



NOMINAL SIZE 5

Coded coupling				Plug nipple					
	Thread	Function	Coding Form		Thread	Function	Coding Form		
	VTT4131-010500	female G1/8	with shut-off	round		VTT4034-010500	female G1/8	without shut-off	round
	VTT4131-010503	female G1/8	with shut-off	3-sided		VTT4034-010503	female G1/8	without shut-off	3-sided
	VTT4131-010506	female G1/8	with shut-off	6-sided		VTT4034-010506	female G1/8	without shut-off	6-sided
	VTT4131-010508	female G1/8	with shut-off	8-sided		VTT4034-010508	female G1/8	without shut-off	8-sided

COUPLINGS FOR SHUT-OFF ON BOTH SIDES



NOMINAL SIZE 5

Coded coupling				Plug nipple					
	Thread	Function	Coding Form		Thread	Function	Coding Form		
	VTT4131-010500	female G1/8	with shut-off	round		VTT4134-010500	female G1/8	with shut-off	round
	VTT4131-010503	female G1/8	with shut-off	3-sided		VTT4134-010503	female G1/8	with shut-off	3-sided
	VTT4131-010506	female G1/8	with shut-off	6-sided		VTT4134-010506	female G1/8	with shut-off	6-sided
	VTT4131-010508	female G1/8	with shut-off	8-sided		VTT4134-010508	female G1/8	with shut-off	8-sided

QUICK CONNECT COUPLING



- Nominal size: 2.5 | 5 | 7 | 10
- Available with one-sided or double-sided shut-off function for optimum safety
- Seal FPM**
- Material stainless steel 316L (1.4404)
- Acceptable medium: Cooling water | air | gases
- Temperature range -4 to 248 F (-20 to 120 C)
- Operating pressure range 7-145 psi (0.5 to 10 bar)

COUPLINGS FOR ONE-SIDED SHUT-OFF



NOMINAL SIZE 2.5

Coupling	Thread	Function	Plug nipple*	Thread	Function
 4091-0102	female G1/8	with shut-off	 4094-0102	female G1/8	without shut-off
 4092-0202	G1/8	with shut-off	 4095-0202	G1/8	without shut-off
 4092-5002	M5	with shut-off	 4095-5002	M5	without shut-off

NOMINAL SIZE 5

Coupling	Thread	Function	Plug nipple*	Thread	Function
 4091-0105	female G1/8	with shut-off	 4094-0105	female G1/8	without shut-off
 4091-0305	female G1/4	with shut-off	 4094-0305	female G1/4	without shut-off
 4092-0205	G1/8	with shut-off	 4095-0205	G1/8	without shut-off
 4092-0405	G1/4	with shut-off	 4095-0405	G1/4	without shut-off

NOMINAL SIZE 7

Coupling	Thread	Function	Plug nipple*	Thread	Function
 4091-0507	female G3/8	with shut-off	 4094-0507	female G3/8	without shut-off
 4092-0207	G1/8	with shut-off	 4095-0207	G1/8	without shut-off
 4092-0407	G1/4	with shut-off	 4095-0407	G1/4	without shut-off
 4092-0607	G3/8	with shut-off	 4095-0607	G3/8	without shut-off
 4092-0807	G1/2	with shut-off	 4095-0807	G1/2	without shut-off

NOMINAL SIZE 10

Coupling	Thread	Function	Plug nipple*	Thread	Function
 4092-0610	G3/8	with shut-off	 4095-0610	G3/8	without shut-off
 4092-0810	G1/2	with shut-off	 4095-0810	G1/2	without shut-off

**more on request

COUPLINGS FOR SHUT-OFF ON BOTH SIDES



NOMINAL SIZE 2.5

	Coupling	Thread	Function		Plug nipple*	Thread	Function
	4191-0102	female G1/8	with shut-off		4194-0102	female G1/8	with shut-off
	4192-0202	G1/8	with shut-off		4195-0202	G1/8	with shut-off
	4192-5002	M5	with shut-off		4195-5002	M5	with shut-off

NOMINAL SIZE 5

	Coded Coupling	Thread	Function	Tube		Plug nipple*	Thread	Function	Tube
	4191-0105	female G1/8	with shut-off	-		4194-0105	female G1/8	with shut-off	-
	4191-0305	female G1/4	with shut-off	-		4194-0305	female G1/4	with shut-off	-
	4192-0205	G1/8	with shut-off	-		4195-0205	G1/8	with shut-off	-
	4192-0405	G1/4	with shut-off	-		4195-0405	G1/4	with shut-off	-
	4180-0205928	bulkhead M14x1	with shut-off	OD4mm		4181-0205928	bulkhead M14x1	with shut-off	OD4mm
	4180-0605928	bulkhead M16x1	with shut-off	OD8mm		4181-0605928	bulkhead M16x1	with shut-off	OD8mm

NOMINAL SIZE 7

	Coupling	Thread	Function		Plug nipple*	Thread	Function
	4191-0507	female G3/8	with shut-off		4194-0507	female G3/8	with shut-off
	4192-0207	G1/8	with shut-off		4195-0207	G1/8	with shut-off
	4192-0407	G1/4	with shut-off		4195-0407	G1/4	with shut-off
	4192-0607	G3/8	with shut-off		4195-0607	G3/8	with shut-off
	4192-0807	G1/2	with shut-off		4195-0807	G1/2	with shut-off

NOMINAL SIZE 10

	Coupling	Thread	Function		Plug nipple*	Thread	Function
	4192-0610	G3/8	with shut-off		4195-0610	G3/8	with shut-off
	4192-0810	G1/2	with shut-off		4195-0810	G1/2	with shut-off

YOU CAN FIND FITTING CONNECTIONS AND ACCESSORIES FOR ALL QUICK-COUPPLINGS IN OUR INOXLIN CATALOG

ACCESSORY EXAMPLES

Double nipple



Thread adapter



Tube socket



Straight screw-in connector



Bulkhead connection



Straight screw-in connector



FITTING FDA COMPLIANT TUBES

Plastic tube PTFE

- Made of polytetrafluoroethylene (PTFE, Teflon)
- Natural color
- Externally calibrated; for use with Eisele push-in connections
- Temperature range: -310 to 500 F (-190 to 260 C)
- Free of plasticizers, PWIS and copper
- UV and solvent resistant
- FDA compliant according to 21 CFR 177.2600
- Flame retardant according to UL94 V0 to V2

Eisele Hydro plastic tube

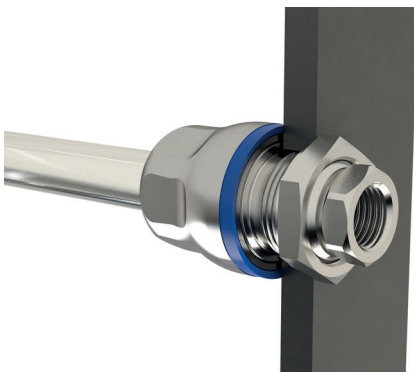
- Made from polyether polyurethane (PU-H)
- Solid color: black, blue, red
- Externally calibrated; for use with Eisele push-in connections
- Temperature range: -31 to 140 F (-35 to 60 C)
- Free of halogen, plasticizers, PWIS, copper and PTFE
- Kink-resistant and suitable for drag chains
- UV, hydrolysis and microbe resistant
- FDA compliant according to 21 CFR 177.2600
- Suitable for vacuum

POSSIBLE SEALING MATERIALS



- FKM
- EPDM
- HNBR | NBR
- FFKM
- Temperature range: -58 to 392 F (-50 to 200 C)
- FDA, UBA, DVGW- W270*

+ CLEANLINE



**VISIT US:
WWW.EISELE.EU/EN**



Illustrations not binding, subject to change,
no liability for errors and misprints - 03.24

EISELE | Germany
info@eisele.eu
www.eisele.eu
Tel: +49 (0)7151-1719-0

Eisele

Member of **HENN** Connector Group